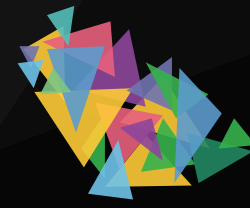


NAIIA
ن ا ا ا ا



شركة جودة الحياة العقارية
LIVE QUALITY REAL ESTATE



LIVE QUALITY REAL ESTATE

LIVE QUALITY REAL ESTATE

GLORY TOWER



ABOUT THE PROJECT

CONCEPT

Glory Tower is a luxury office project that includes a limited number of offices, each characterized by occupying an entire floor with small spaces.

The project is distinguished by its luxury, privacy, and independence, offering tenants the opportunity to enjoy a full floor with direct views of King Fahd Road. Additionally, **Glory Tower** contains exclusive and luxurious residential apartments, providing a comprehensive environment for both work and living.



Glory Tower stands out as a prominent model in the world of luxury office real estate, with an architectural design that focuses on innovation and luxury.



This moment can be captured in the early morning, as the golden rays reflect on the interior surfaces, creating a warm, positive, and stimulating atmosphere.

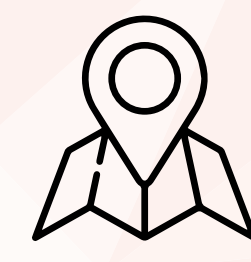


Imagine a picture that blends modern architecture with nature, where the building's interior spaces embrace green plants.

This image demonstrates how green spaces can add a touch of vitality and refreshment to the work environment, thereby enhancing the psychological well-being of employees and visitors.



The project consists of luxurious residential apartments and a limited number of exclusive offices, each offering independence by occupying an entire floor, thus providing an ideal space for a highly efficient and high-performance work environment.



Glory Tower is located in an exceptional location in the Al Mohamadiyah neighborhood, offering wonderful views of prominent landmarks and ensuring easy access to the main business centers in Riyadh, including proximity to Riyadh Gallery Mall and the Financial Center.

These features make it the perfect place for companies seeking to establish a strong and distinguished presence in the capital.



ABOUT THE PROJECT

LOCATION

Glory Tower is located in Al Mohamadiyah neighborhood, a prime location overlooking Riyadh Gallery Mall.

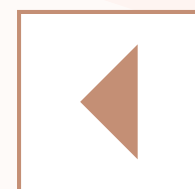
The project is only 7 minutes away from the Financial Center, making it close to one of the most important commercial and financial hubs in the city.

The location also offers easy access from various parts of Riyadh, especially for those coming from the east, south, and north, making it an ideal location for businesses seeking distinction and luxury in the capital.

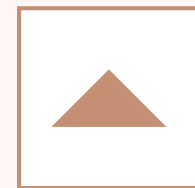


PROJECT LOCATION

The main roads surrounding the project are approximately as follows:



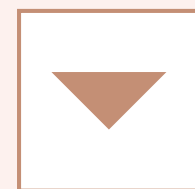
West
Takhassusi Road



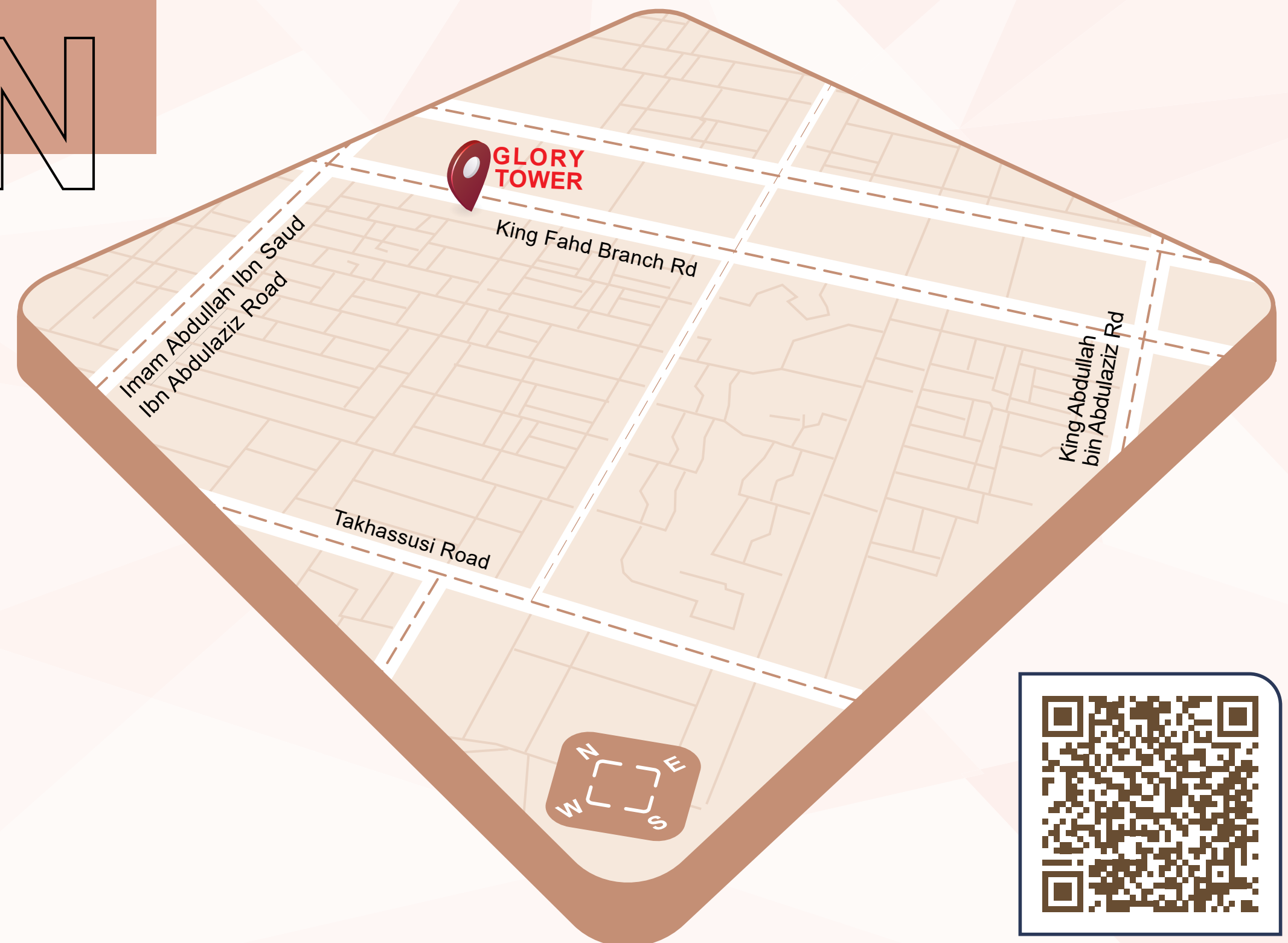
North
Imam Muhammad bin Saud Road



East
King Fahd bin Abdulaziz Road



South
King Abdullah bin Abdulaziz Road



GENERAL INFORMATION

- ▼ Land area: 1,460 square meters
- ▼ Leasable area: 3,216 sqm.

Residential Apartments:

- ▼ Number of residential apartments: 9

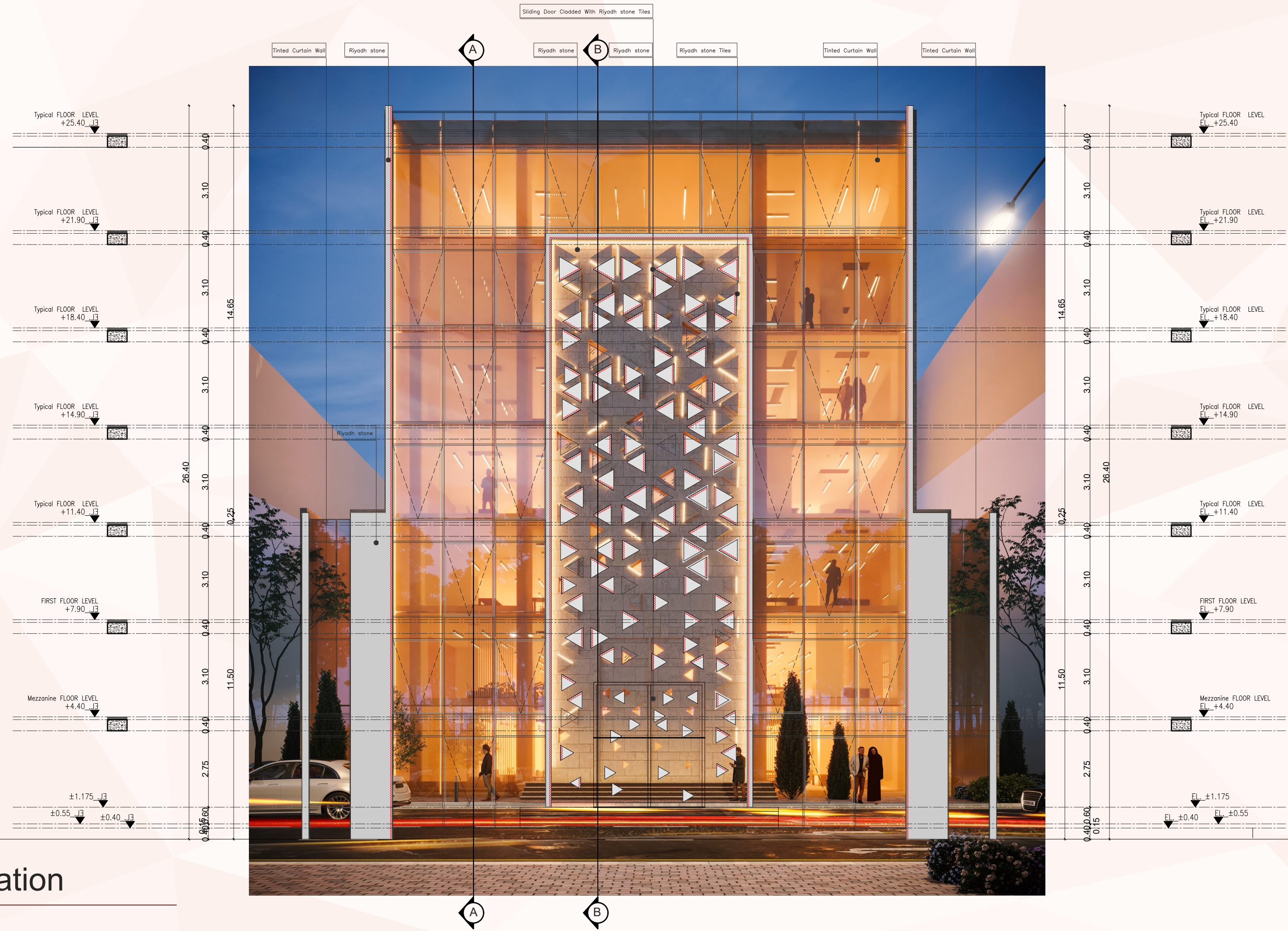
ADDITIONAL INFORMATION:

- ▼ Number of available parking spots: 65
- ▼ Number of elevators: 2.

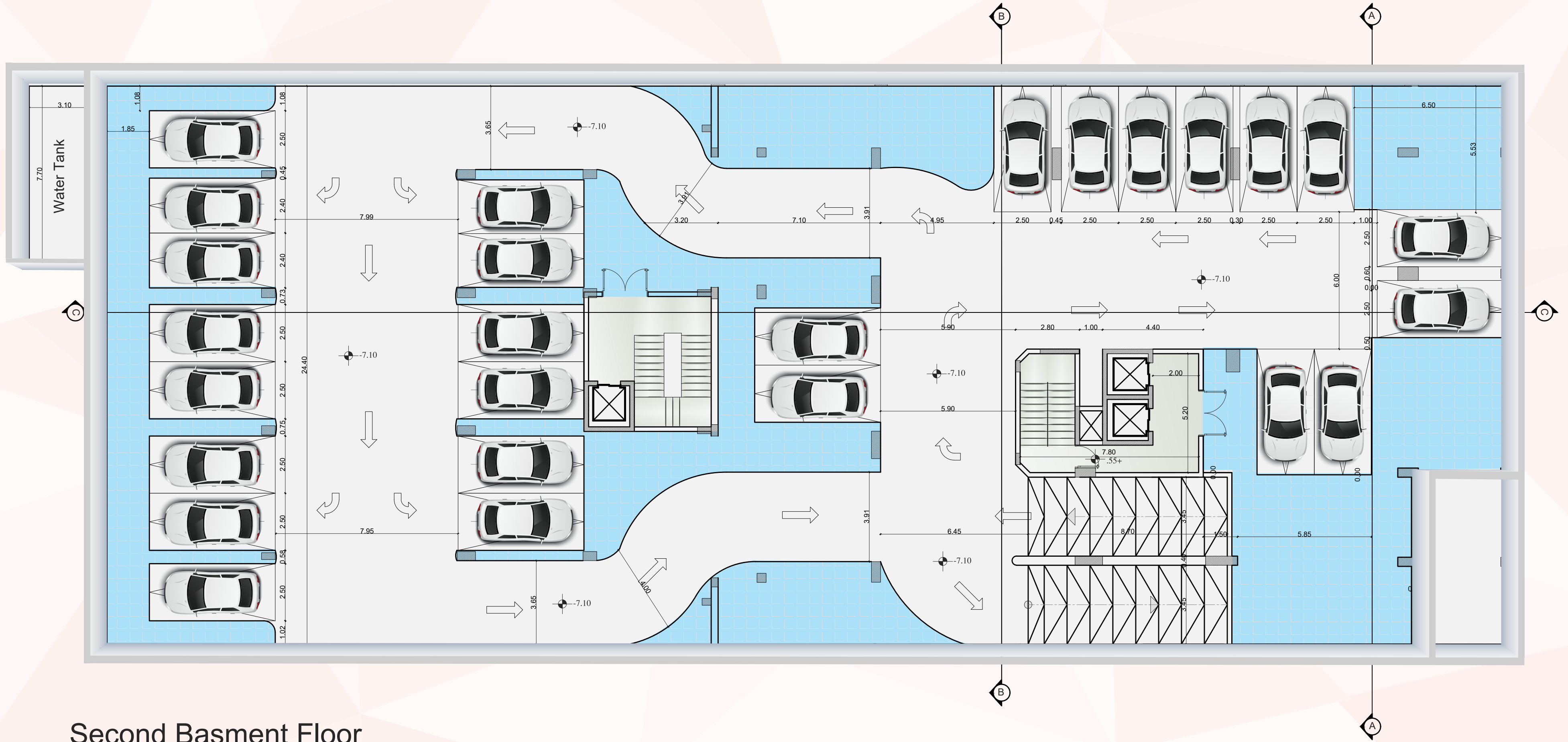
Building Components:

- ▼ Administrative Offices
- ▼ First Basement
- ▼ Second Basement
- ▼ Ground Floor
- ▼ Mezzanine Floor
- ▼ First Floor
- ▼ Second Floor
- ▼ Third Floor
- ▼ Fourth Floor
- ▼ Fifth Floor
- ▼ Sixth Floor

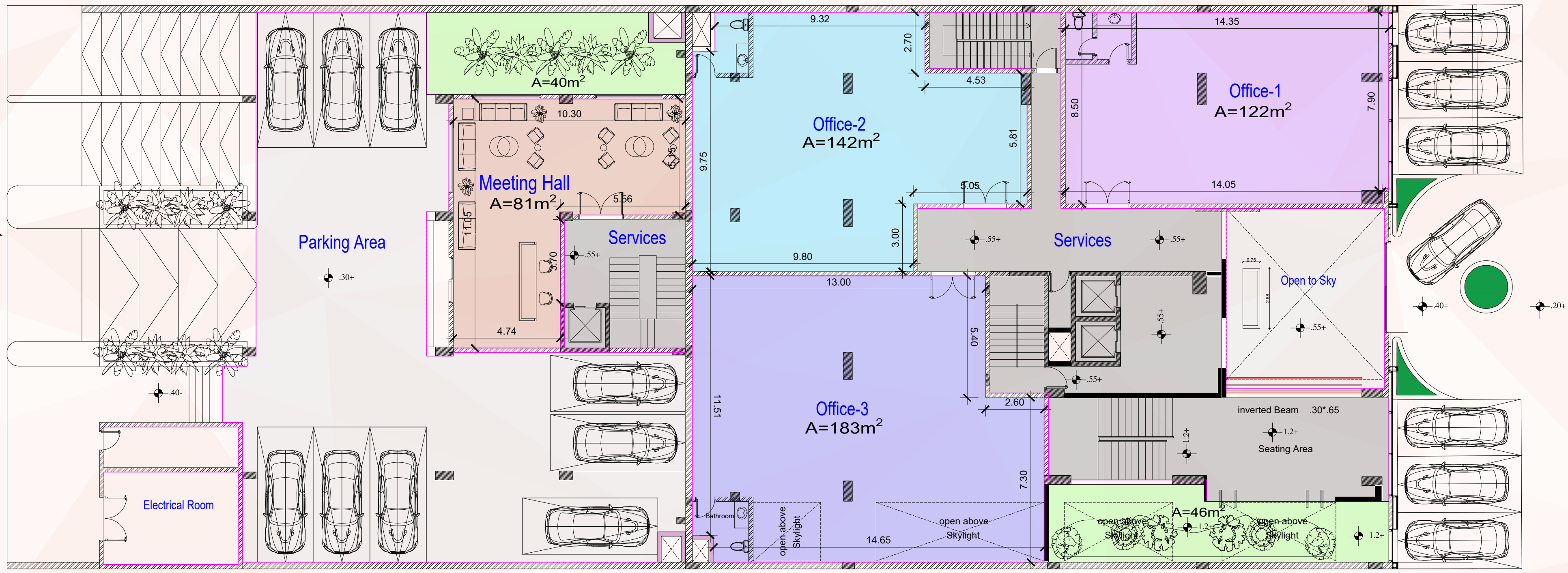




Front Elevation

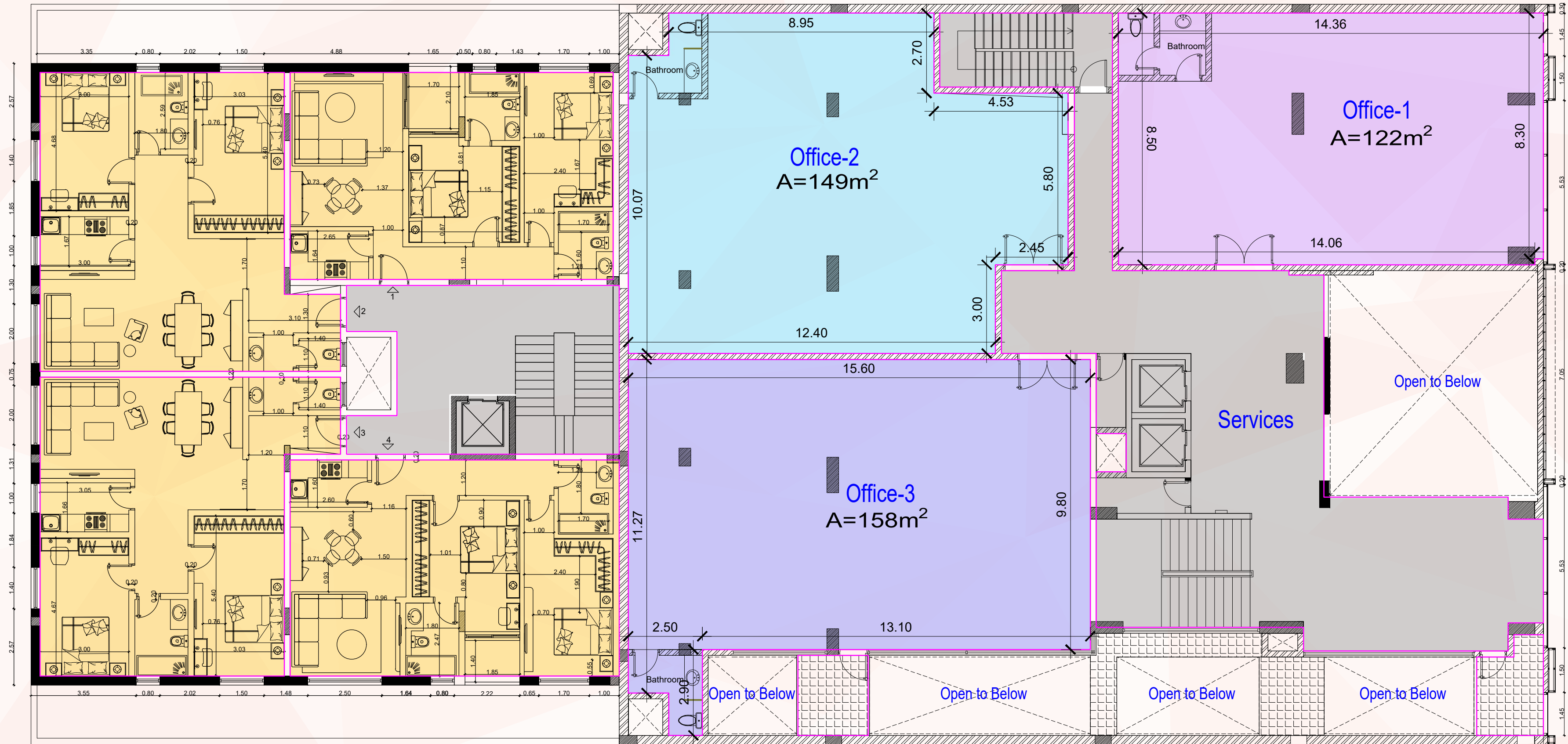


Second Basement Floor



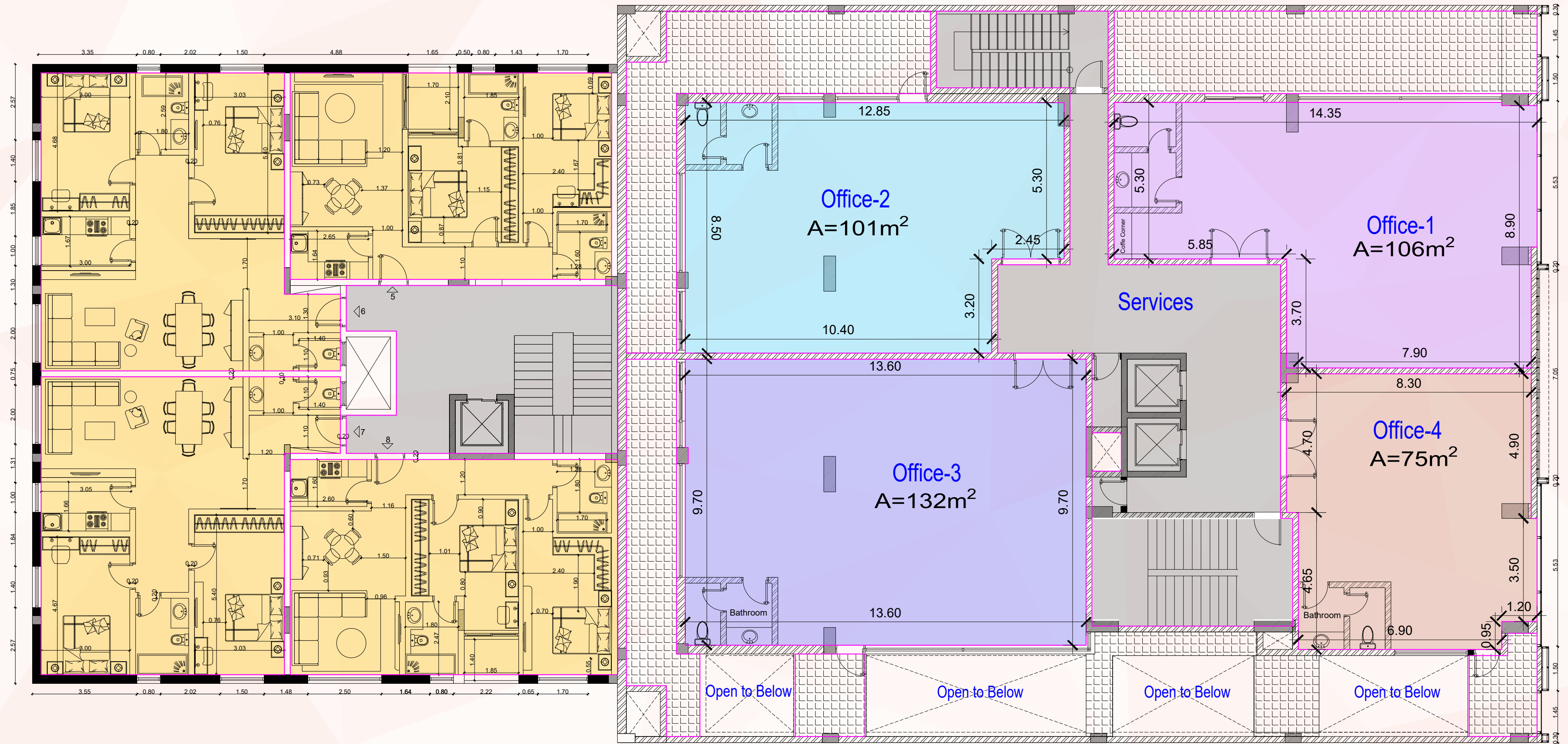
Ground Floor Plan

754 m²



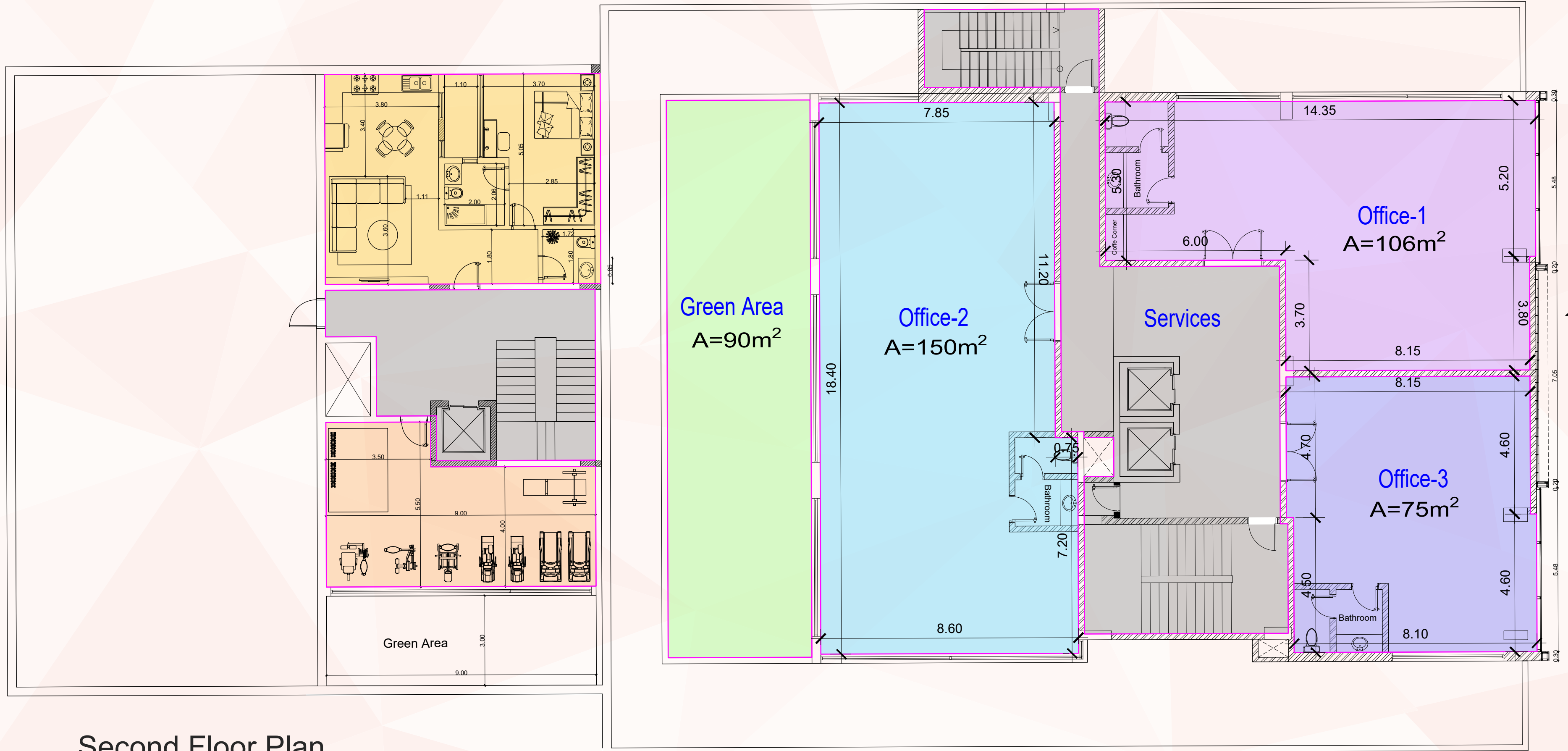
Mezzanine Floor Plan

754 m²



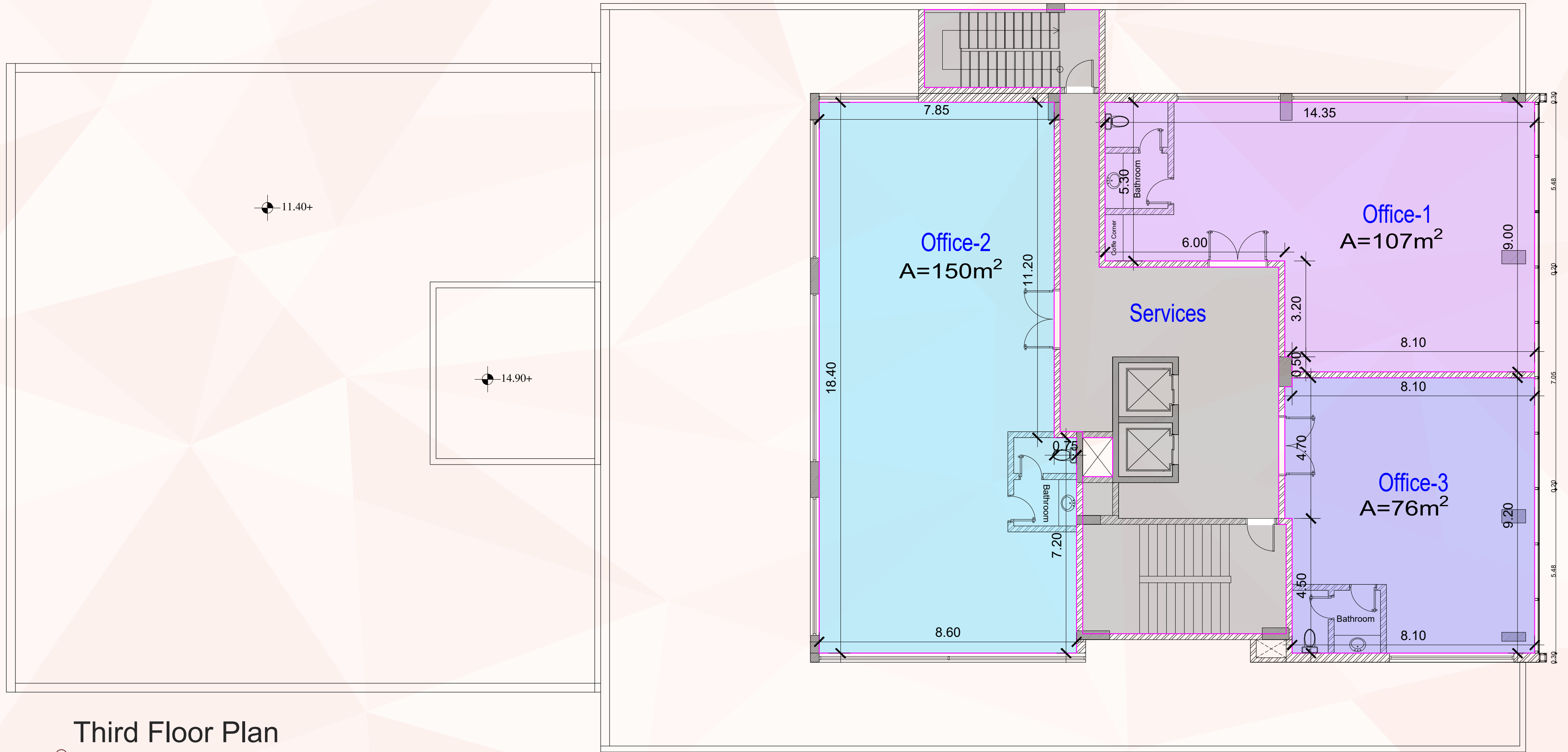
First Floor Plan

754 m²



Second Floor Plan

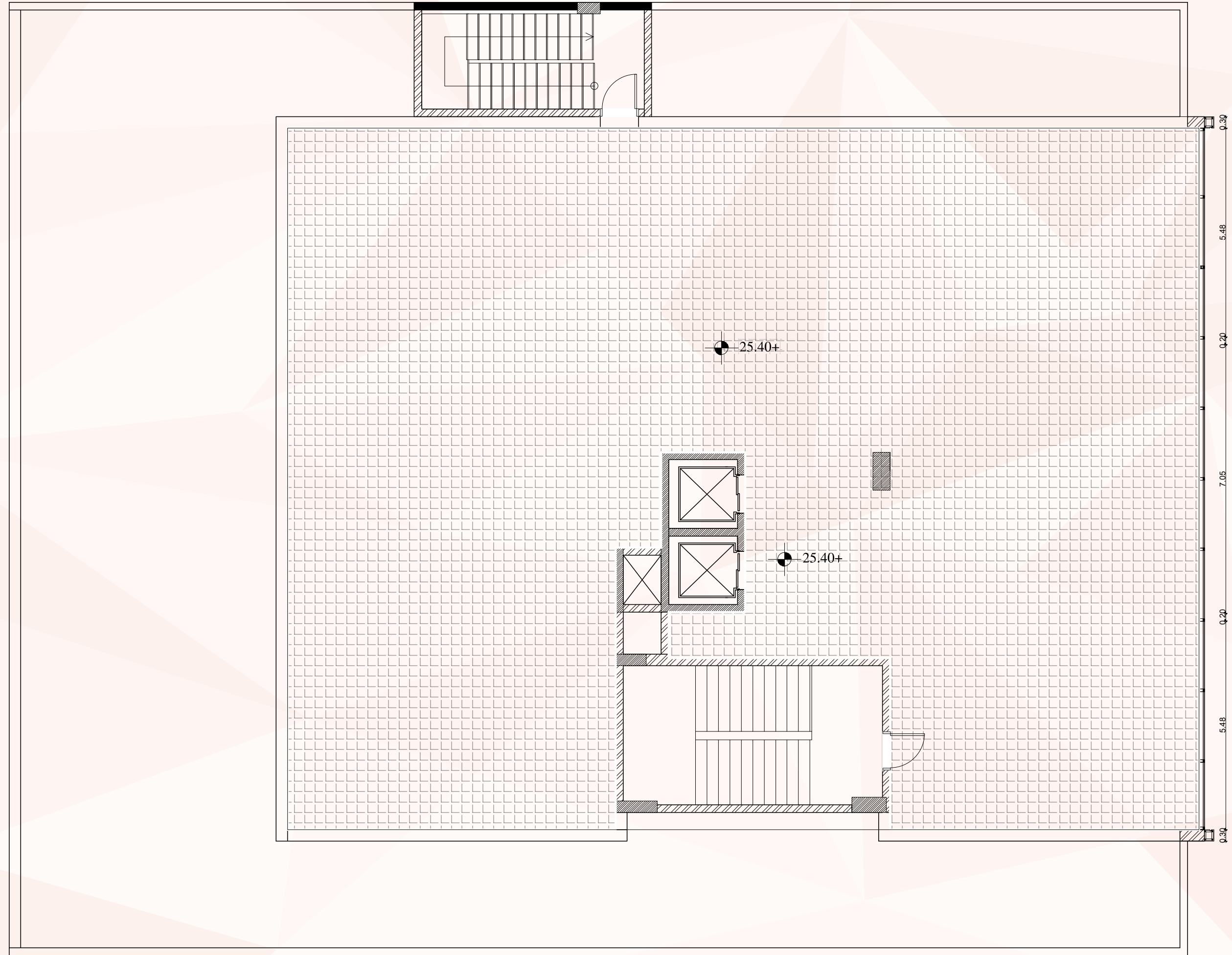
536 m²



Third Floor Plan

440 m²

Roof Floor Plan



AREA

INFORMATION

754 m²
Ground Floor
Area

754 m²
Mezzanine
Area

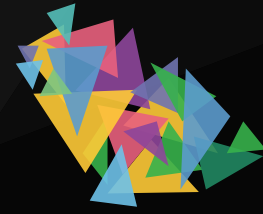
754 m²
First Floor
Office Area

536 m²
Second Floor
Office Area

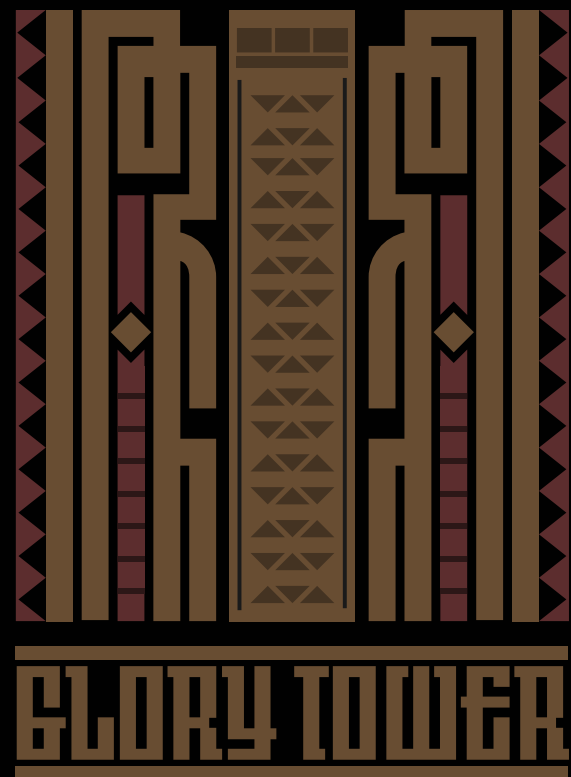
440 m²
Third, Fourth & Fifth
Floors Office Area



NALIA
نـاـمـا

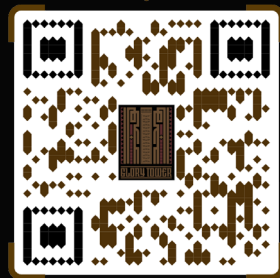


شركة جودة الحياة العقارية
LIVE QUALITY REAL ESTATE



LIVE QUALITY REAL ESTATE

Inquire now



Contact info:

Contact@nama-re.com
www.nama-re.com

